

# The Fabric of Bedford

A digital exhibition of work by local pupils aged 4-16

## THE HARPUR TRUST ART COMPETITION 2020



#HTARTCOMP2020





## **THE HARPUR TRUST 2020 ART COMPETITION & EXHIBITION – THE FABRIC OF BEDFORD**

Following the success of The Harpur Trust's 450th Anniversary Art competition in 2016 and The Happy Place competition in 2018, we are delighted once again to have been able to run a competition for Bedford Borough pupils aged between 4 and 18 years of age.

As part of the competition, we commissioned a team of professional local artists to go out into state schools to deliver workshops over a 6 month period. They also hosted inset days for teachers at these schools to inspire them and do some development training on creating art classes using cupboard supplies.

Prizes were awarded to both the winning pupils in each category, and a further prize has been donated to their schools to be used for purchasing art equipment.

This year, COVID-19 put a stop to our usual exhibition at The Higgins Bedford. However, we are delighted to be able to celebrate all the hard-work and talent of the children virtually. For the first time ever, we live streamed a special awards celebration and all of the art work submitted is now on display in our newly created online gallery.

We hope you enjoy seeing the pupils' view of  
**The Fabric of Bedford.**

## OUR JUDGES

**Tom Perrett** is Manager for Libraries & Culture for Bedford Borough Council, which includes responsibility as Curator for The Higgins Bedford, as well as for the Borough's Library Service and Bedford Corn Exchange. He led on the redevelopment of the art gallery and museum, which aims to be a community hub that works both with and for local people. The museum has an impressive collection of works by Turner, Picasso, Bawden and a whole host of famous artists. The Higgins is proud to work in partnership with the Harpur Trust and to have exhibited the work of Bedford children as part of the project.

**Elaine Midgley** is Director of Bedford Creative Arts (BCA), an arts charity that has been producing art with the community for over 30 years in Bedfordshire. BCA's vision is that all communities will have an outrageous sense of entitlement to the arts because they believe in its power as a tool for change and self-expression. BCA produces art projects in any art-form that address issues of social injustice and supports place-making. Elaine has an MA in Arts Management and has worked in theatre, venue and outdoor arts since 2004 including delivering Arts Award and running a theatre company for young people. Elaine believes that art can transform people's lives and she is delighted to see how young people are allowing their art to transform people, including themselves, through this exhibition.

**Toby Clark** is the Director of the Arts at Bedford College Group. The Arts directorate is home to over 1000 students studying visual and performing arts across Bedfordshire and North Northamptonshire and from level 1 to BA Hons. The Arts at the Bedford College Group focus on the development of design skills to underpin creative practice and enjoy a strong reputation in national and international competitions at every level. A Fine Art Graduate, Toby also worked in the audio and media industry and appreciates first-hand the importance of developing both craft skills and creativity for enabling young people to carve a niche in the creative industries.

## THE COMPETITION BRIEF

This year, the theme is 'The Fabric of Bedford'. The Harpur Trust is part of the fabric of Bedford. We've been here in the town for over 450 years and as well as running our schools, we make grants to local charitable organisations and voluntary groups to the tune of over £1 million each year. We also look after older people in the town throughout alms-houses and other accommodation. We would like to know what you think captures the heart of Bedford and makes our town unique?



## OUR VISITING ARTISTS



**Katie Allen**

I am an illustrator who loves big bold, colourful designs of typography and quirky patterns. I work in ink, pen and pencil, and complete my illustrations digitally to add vivid colour and layers inspired by my love of printmaking.



**Anne-Marie Abate**

I am an artist, educator and curator. My personal artwork encompasses a multitude of mixed media including textiles, sculpture, print, collage and paint. The majority of my work uses recycled or found objects. As well as being a part-time specialist art tutor, I have delivered workshops to schools, community groups and safe houses for 12 years. The basement Gallery and The Bluebell Gallery are two community exhibition spaces in Bedford that I have curated for four years.



**Tiffany Logan**

The inspiration for most of my work comes from the effects of weathering on wood, metal and stone. I find as much beauty in a peeling painted door as I do a seed head from a flower. I love the accidental and haphazard things that occur within the act of painting. The process is important to me – and I like to see bits of the painting's history. I tend to work in a semi abstract way, intuitively using layers of colour to distort and change my subject. I use a range of media, including acrylic paint, collage and more recently jewellery using mosaic and soldering.



## Amanda Silk

I am a ceramicist, illustrator and craft maker offering tailored sessions from my garden studio and in a variety of educational settings across Bedfordshire. I have a natural affinity to making with a variety of materials, including clay, wood, metal and glass; there is a simple delight and satisfaction in saying 'I made that.' As a qualified teacher I have a passion for the creative process and work with all abilities. My own artwork is influenced by the human form and natural wood.



## Susan Erskine-Jones

My mixed media work uses the cross over between printmaking and painting. I use palette knives, rollers, rags and occasionally paint brushes. I evoke the feeling or memory of a place as I experienced it through the use of my layering of paint and collage onto paper.

## CATEGORY 1 (4-7 years)

---



### 1<sup>st</sup> Place

#### Kings Oak Primary

*Fatoumata*

**Swans and Bridges** "I used sticky tape to make it then painted the water then used pencils (watercolour pencils). Then I used 'magic' water to make the trees and the bridge".



## 2nd Place

### Putnoe Primary School

*Maja*

**Ink Print** “My favourite work was ‘Butterfly Bridge’ because it made me think its real and about its strong, huge white wings holding thousands of people on its back. My picture is an Ink Print of stuff we found around Bedford, like toy car wheels and feathers. We dipped it into ink and printed the patters on our piece of paper”.



## 3rd Place

### Renhold Primary School

*Isaac*

**Landmark** “We represented key landmarks and building in Bedford through the use of printing. We focused on pattern, design and repetition, choosing contrast when placing the building choice onto the background”.



## Commendation

### Edith Cavell Primary School

*Felicity*

We went for a walk around Bedford to see all the fantastic buildings from the Victorian Era and learned lots about them. We then talked about how those Victorian buildings help to contribute to the heart of Bedford and were fascinated by all the interesting facts we learnt about them.

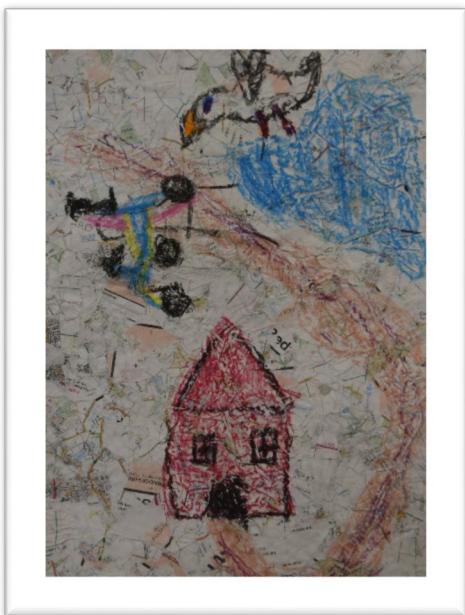


## Commendation

### Edith Cavell Primary School

*Joshua*

We have an entry from Joshua of the swans on the lake.



## Commendation

### Putnoe Primary School

*Isabella*

Our Journey to School.



## CATEGORY 2 (7-11 years)

---



### 1st Place

#### Sheerhatch Primary School

*Ruby*

"I love the bridge it brings back loads of memories. I sometimes go with my cousins and my Mums. Also, I go to feed the swans and ducks and get an ice cream and go to the park. I go to the River Festival and watch the boats go past. I chose the Suspension Bridge because in town it is really eye-catching, and I like the shape and detail."



### 2nd Place

#### St James VA Primary

*Faith*

"With my design I chose to use the colours red, orange and yellow because I wanted it to be quite bright and show my bubbly personality. I also wanted to base it on my Zimbabwe culture because they use similar patterns in their material. The print I did looked like lace as this is important in Bedford because of Bedfordshire lace".





### 3rd Place

#### Grange Academy

Aisha

“Doing the mosaic was good fun!”.

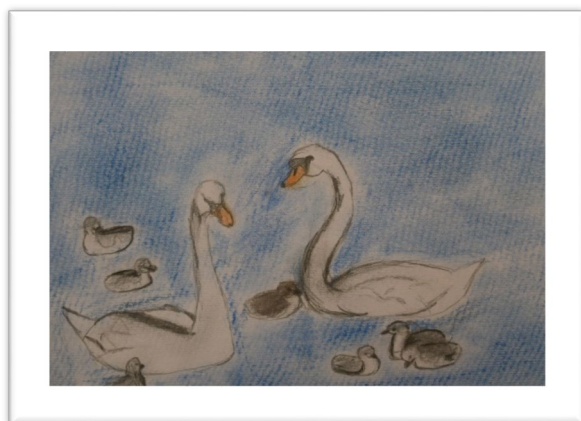


### Commendation

#### Putnoe Primary School

Georg

**Bedford of Tomorrow** “I looked at old newspapers and articles from what Bedford was like many years ago. This got me thinking what Bedford might look like in the future. This inspired me to create a collage of futuristic Bedford and old Bedford. I made up some ads and headlines from the future; I printed some old ads and tea-stained them. Finally, I got some present-day articles and stuck everything on an A2 piece of paper”.



### Commendation

#### Kings Oak Primary School

Alfie

“I chose the swans because of the baby swans and I like furry baby animals. I did it with the pastels because if I didn't my whole background wouldn't be that good.”



## Commendation

### St James VA Primary School

*Isla*

“I have created a colourful and black and white perspective picture using water colours. It is of Bedford to this day (left) and Bedford 100 years ago (right) to show how Bedford is always changing. Firstly, I cut out two photos of the image and stuck them opposite each other. Next, I copied out the image using pencil. Lastly I painted the copied image on to watercolour paper.”

## CATEGORY 3 (11-14 years)

---



### 1st Place

**Mark Rutherford School**

*Amelia*

“This picture represents the Fabric of Bedford. The people on the picture represent the Bedford citizens and the pictures in the hearts are in time order”.



### 2nd Place

**Castle Newnham School**

*Sienna and Daisy*

“This collage is an impression of Bedford Borough Hall in the style of Artist and Architect Fredrich Hunterwasser. Year 7 pupils were challenged to use their creativity to transform well known and dreary Bedford buildings with vibrant colour, texture and shape.”



### 3rd Place

**Bedford Girls School**

*Olivia*



## Commendation

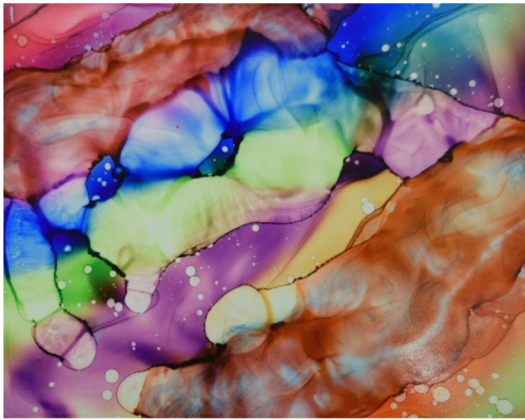
### Mark Rutherford School

*Rebecca*

I decided to paint this because people don't think about Bedford, but I am want many people know it is beautiful place! You may be wondering about the leaves. I think the leaves are the most important think because it portrays the fact that many people close doors on Bedford but when you open doors, leaves will see the beauty of Bedford.

## CATEGORY 4 (14-16 years)

---



### 1st Place

#### Greys Academy

*Rhiannon*

“My tile shows the Fabric of Bedford and is an abstract representation of hands of different colours holding each other. Our community is diverse just like all the colours and we need to be there for one another”.



### 2nd Place

#### Wootton Upper School

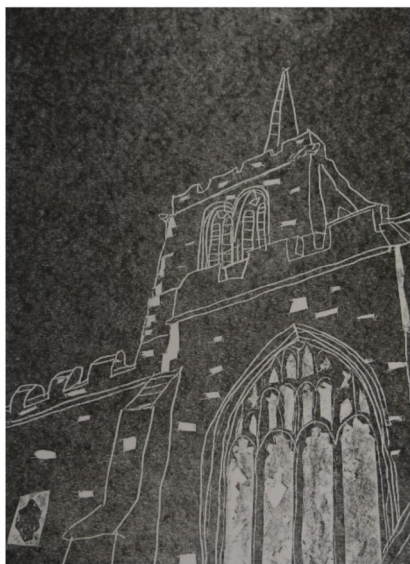
*Bobbi*



**3rd Place**

**Wootton Upper School**

*Eva*



**Commendation**

**Wootton Upper School**

*Thomas*



**Commendation**

**Wootton Upper School**

*Aaliyah*

# THE HARPUR TRUST CHOICE AWARD



1st Place

Wixams Academy

Lucy

The pupils at Wixams Academy explored the theme of Bedford Festivals.



## **OUR THANKS TO:**

**The Higgins Bedford**

**Bedford Creative Arts**

**Bedford College Group**

**Wallis Brown Studios**

**The Arc, Bedford**

**Future Legend Media**

**MSO.net**

**Bombora.tv**

**Our special guests starring in the Awards Evening**

**Our judges and team of Artists**

**The Art teachers at participating schools**

**And finally, a very special thank you to all the children who took part.**

**[www.harpurtrust.org.uk/art-competition/gallery](http://www.harpurtrust.org.uk/art-competition/gallery)**